



Brrr...It's Cold Outside

Oil Pattern Distance:	35 Feet	Reverse Brush Drop:	30 Feet	Oil Per Board:	50 uL
Forward Oil Total:	15.8 mL	Reverse Oil Total:	10.25 mL	Volume Oil Total:	26.05 mL
Forward Boards Crossed:	316 Boards	Reverse Boards Crossed:	205 Boards	Total Boards Crossed:	521 Boards

	Start	Stop	Loads	Speed	Crossed	Start	End	Feet	T.Oil
1	2L	2R	2	14	74	0.0	1.9	1.9	3700
2	4L	4R	2	18	66	1.9	7.0	5.1	3300
3	5L	5R	2	18	62	7.0	12.1	5.1	3100
4	6L	6R	3	22	87	12.1	21.4	9.3	4350
5	7L	7R	1	22	27	21.4	24.5	3.1	1350
6	2L	2R	0	30	0	24.5	35.0	10.5	0

Navigation: Forward Reverse More

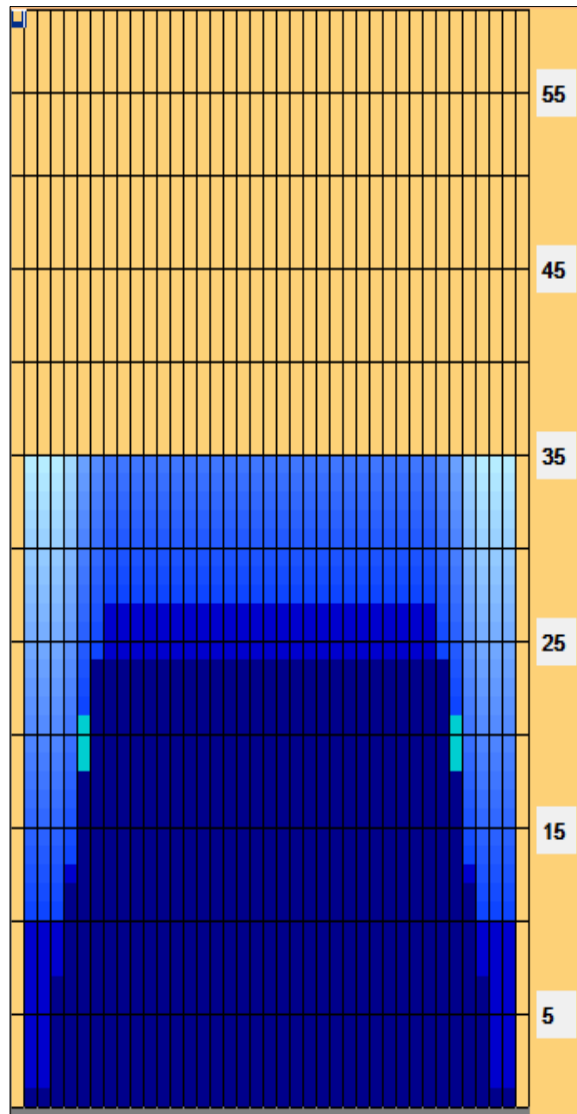
	Start	Stop	Loads	Speed	Crossed	Start	End	Feet	T.Oil
1	2L	2R	0	30	0	35.0	27.0	-8.0	0
2	8L	8R	1	22	25	27.0	23.9	-3.1	1250
3	7L	7R	2	22	54	23.9	17.7	-6.2	2700
4	6L	6R	2	18	58	17.7	12.6	-5.1	2900
5	5L	5R	1	18	31	12.6	10.1	-2.5	1550
6	2L	2R	1	14	37	10.1	8.2	-1.9	1850
7	2L	2R	0	14	0	8.2	0.0	-8.2	0

Navigation: Forward Reverse More

Conditioner:
Type In or Select One

TransferType:
Type In or Select One

- Forward
- Reverse
- Combined
- Buff



Item	3L-7L:18L-18R	8L-12L:18L-18R	13L-17L:18L-18R	18L-18R:17R-13R	18L-18R:12R-8R	18L-18R:7R-3R
Description	Outside Track:Middle	Middle Track:Middle	Inside Track:Middle	Middle: Inside Track	Middle:Middle Track	Middle:Outside Track
Track Zone Ratio	1.89	1	1	1	1	1.89

